

Piano

# HV 373 - Det er et navn over alle

ID-98373\_C13S\_MWV

Version 01

Lyrics by Ingrid Bekkevold (1947)

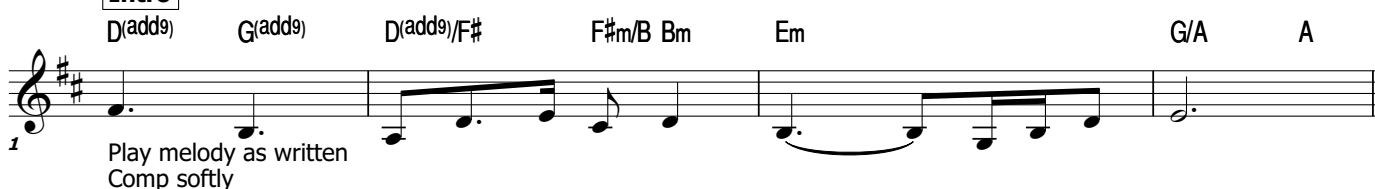
Music: Swedish melody

Arrangement by Carolin Schneider (2025)

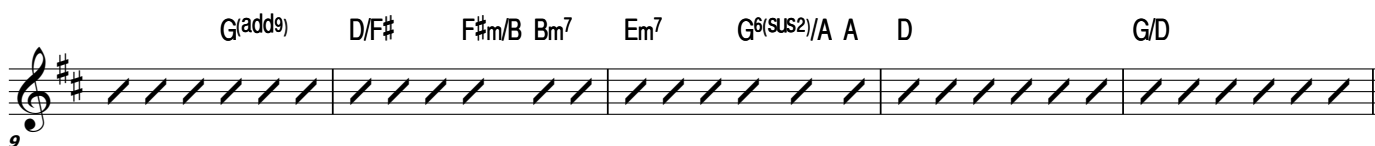
♩ = 98



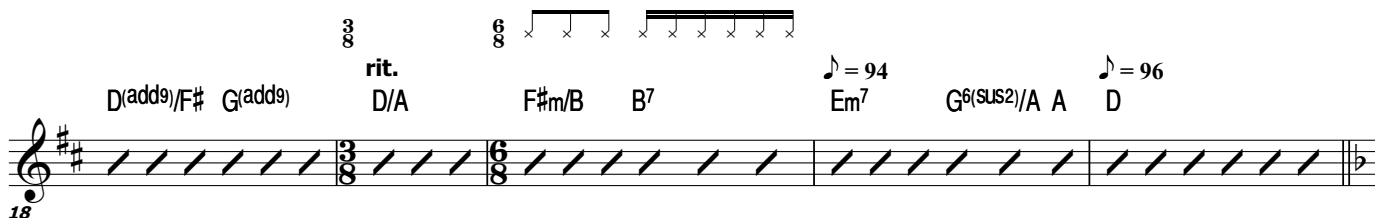
## Intro



## Verse 1



## Verse 2



**Chorus**

♩ = 98 3

rit. - -

♩ = 98

*p* Light and soft "sunshine"

6 3 6 3 6 3 3

Gm<sup>7</sup> C<sup>7</sup> Am<sup>7</sup> C/D D

rit. - - - - -

♩ = 98

Gm<sup>7</sup> C<sup>7</sup>

**Interlude 1**

F(add9) Bb(add9)/F F(add9) Bb(add9)/F

**Verse 3**

5 3

**Chorus**

4

*p* Light and soft "sunshine"

6 3 6 3 6 3 3

Gm<sup>7</sup> C<sup>7</sup> Am<sup>7</sup> C/D D

Gm<sup>7</sup> C<sup>7</sup>


**Interlude 2**

F(add9) Bb(add9)/F F(add9) Bb(add9)/F

**Verse 4**

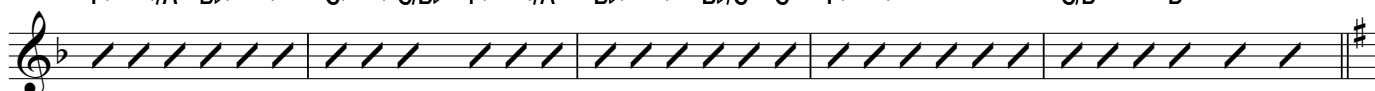
♩ = 100

F(add9) Bb/F F(add9) Bb/C C(add9) Bb/C F(add9)



F(add9)/A B $\flat$ (add9) C(sus4) C/B $\flat$  F(add9)/A B $\flat$ (add9) B $\flat$ /C C F(add9) C/D **rit.** D

62



## Verse 5


♩ = 98 G(add9) C/G G(add9) C/D D(add9) C/D G(add9)

67



G(add9)/B C(add9) D(sus4) D/C G(add9)/B C(add9) C/D D G(add9)

71




## Chorus

C(add9) G(add9)/B Am<sup>7</sup> D(add9) D(add9)/F# B(add9)/D# Em D/F#

75







**rit.**

6 3 6 3 6 3 3

*p* Light and soft "sunshine"

79





♩ = 88 **rit.** ♩ = 94 **rit.** ♩ = 46 ♩ = 62

G(add9) G

83

